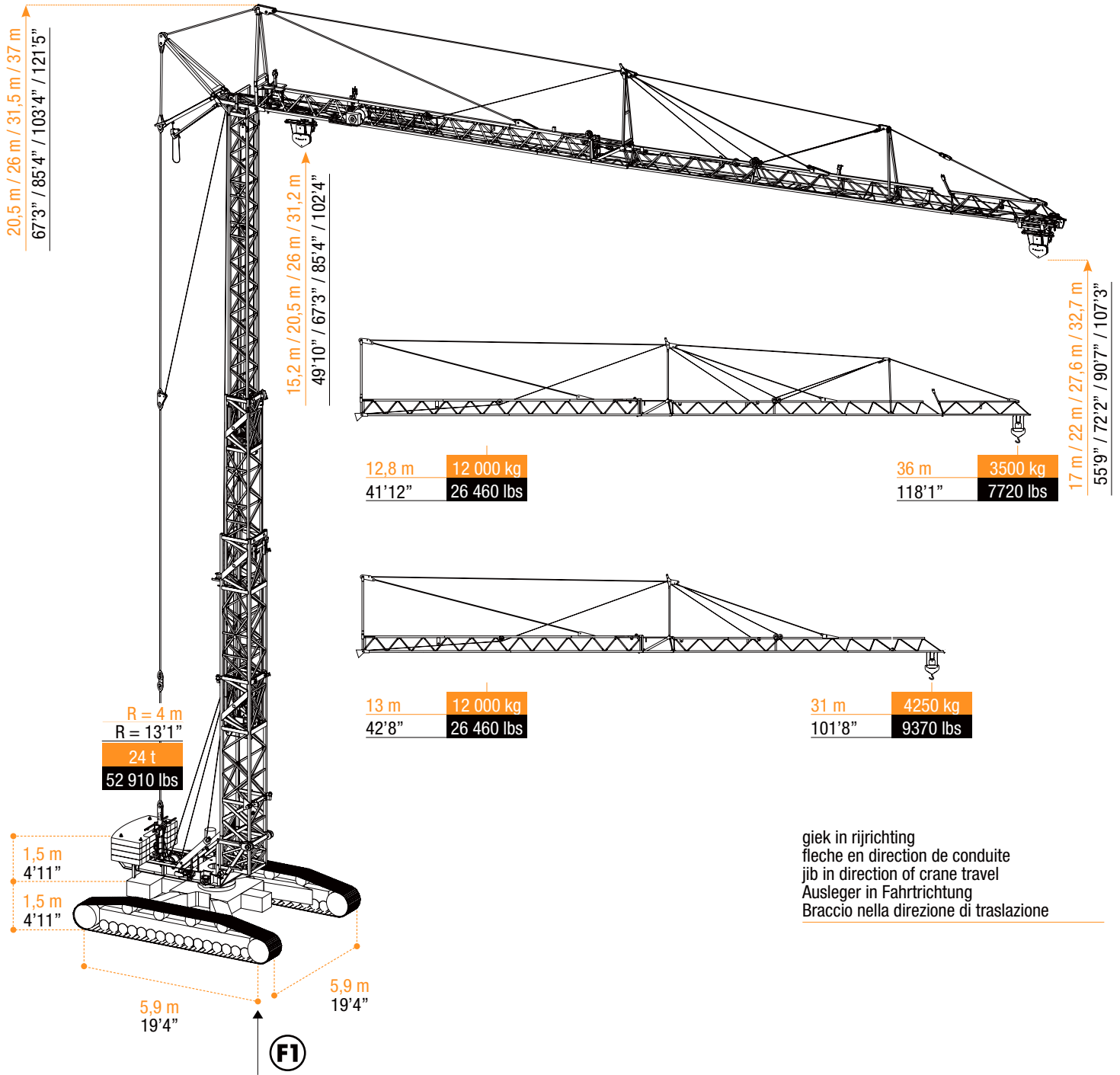


Snelmontagekraan
 Grue à montage rapide
 Schnelleinsatzkran
 Self erecting crane

A 45CR

RML

kraan op rups
 grue sur chenilles
 crawler-crane
 RauPenkran



giek in rijrichting
 fleche en direction de conduite
 jib in direction of crane travel
 Ausleger in Fahrtrichtung
 Braccio nella direzione di traslazione



ARCOMET

www.arcomet.com



LASTENTABEL - COURBES DE CHARGES - LOAD CURVES - LASTKURVEN - CURVE DI CARICO - CURVAS DE CARGAS

m	2,5 - 12,8	14	18	20	22	24	26	28	30	32	34	36
kg	12 000	10 750	7950	7000	6250	5650	5150	4700	4350	4050	3750	3500
ft	8'2" - 41'12"	45'11"	59'1"	65'7"	72'2"	78'9"	85'4"	91'10"	98'5"	104'12"	111'7"	118'1"
lbs	26 460	23 700	17 530	15 430	13 780	12 460	11 350	10 360	9590	8930	8270	7720

m	2,5 - 13	14	18	20	22	24	26	28	30	31
kg	12 000	10 900	8050	7150	6350	5750	5250	4800	4400	4250
ft	8'2" - 42'8"	45'11"	59'1"	65'7"	72'2"	78'9"	85'4"	91'10"	98'5"	101'8"
lbs	26 460	24 030	17 750	15 760	14 000	12 680	11 570	10 580	9700	9370



m	2,5 - 23,2	24	26	28	30	32	34	36
kg	6000	5750	5250	4800	4450	4150	3850	3600
ft	44'4" - 76'1"	78'9"	85'4"	91'10"	98'5"	104'12"	111'7"	118'1"
lbs	13 230	12 680	11 570	10 580	9810	9150	8490	7720

m	2,5 - 23,5	24	26	28	30	31
kg	6000	5850	5350	4900	4500	4350
ft	44'4" - 77'1"	78'9"	85'4"	91'10"	98'5"	101'8"
lbs	13 230	12 900	11 800	10 800	9920	9590

HOEKDRUKKEN - RÉACTIONS - REACTIONS - ECKDRÜCKE - REAZIONI - REACCIONES

			kN	kips		m	ft	kN	kips	RML			m	ft	kN	kips						
																	36	498	36	345	36	430
																	118'1"	112	118'1"	78	118'1"	97
																	31	481	31	326	31	417
	101'8"	108	101'8"	73	101'8"	94																

kg 91 000 >gewicht kraan + rupsonderstel + ballast
 >Weight of crane + Crawler chassis + Ballast
 lbs 200 620 >Peso della gru + base di cingoli + contrappesi

>Poids de la grue + chassis chenillard + lest
 >Gewicht von Kran + Raupenunterwagen + Ballast

kg 67 000 >gewicht kraan + rupsonderstel
 >Weight of crane + Crawler chassis
 lbs 147 710 >Peso della gru + base di cingoli

>Poids de la grue + chassis chenillard
 >Gewicht von Kran + Raupenunterwagen

kg 40 000 >gewicht kraan + rupsonderstel (zonder rupschepen)
 >Weight of crane + Crawler chassis (Without crawler tracks)
 lbs 88 180 >Peso della gru + base di cingoli (Senza Cingoli)

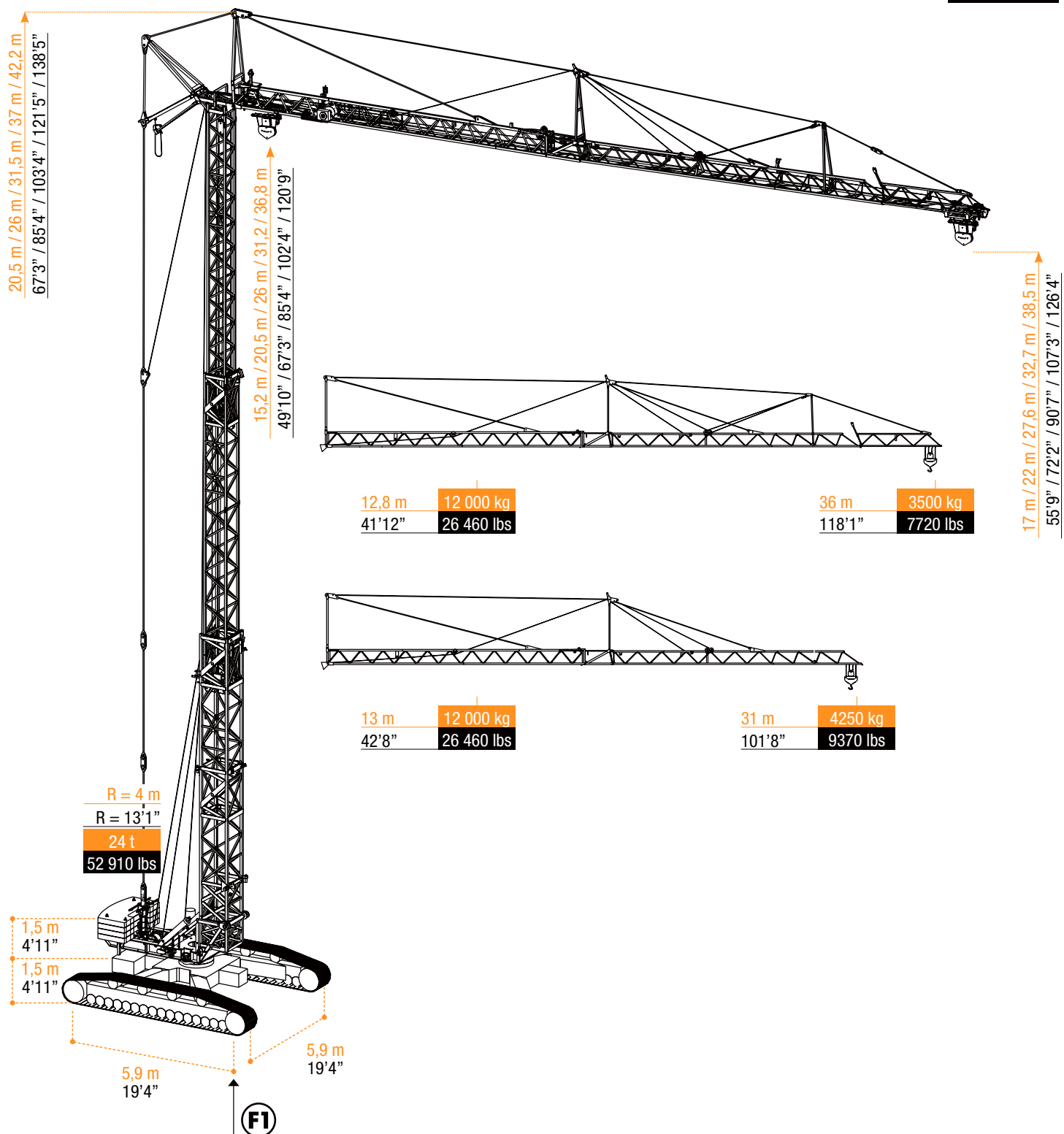
>Poids de la grue + chassis chenillard (sans les chenilles)
 >Gewicht von Kran + Raupenunterwagen (Ohne Raupen)

AANDRIJVINGEN - MÉCHANISMES - MECHANISMS - ANTRIEBE - MECCANISMI - MECANISMOS

			m/min	kg	fpm	lbs	kW	HP				m/min	fpm	tr/min	kVA	380 V / 50 Hz								
																	6,0	26,0	52,0	3,0	13,0	26,0	11 / 22 / 45	7,5 kW
																	6000	6000	3000	12 000	12 000	6000	~36 / 72 / 148	~10,1 HP
																	20	85	171	10	43	85	0 - 0,8	2 x 4,8 kW
																	13 230	13 230	6610	26 460	26 460	13 230	~2 x 6,4 HP	
																	6,0	30,0	30,0	6,0	30,0	30,0		
																	~8,0	~40,2	~40,2	~8,0	~40,2	~40,2		


















STATIONAIR

STATIONAIR



MONTAGE PRINCIPE IDENTIEK AAN A 45B - SYSTÈME DE MONTAGE IDENTIQUE À LA A 45B

CRANE ERECTION SYSTEM IDENTICAL AS A 45B - KRANMONTAGESYSTEM GLEICH WIE A 45B - SISTEMA DI MONTAGGIO UGUALE COME A 45B

 <ul style="list-style-type: none"> •in bedrijf •en service •in service •in Betrieb •in servizio •en servicio 	 <ul style="list-style-type: none"> •buiten bedrijf •hors service •out of service •außer Betrieb •fuori servizio •fuera de servicio 	 <ul style="list-style-type: none"> •hijsen •levage •hoisting •heben •sollevamento •elevación 	 <ul style="list-style-type: none"> •loopkatrijden •chariotage •jib trolleying •Katzfahren •traslazione carrello •poleas móviles 	 <ul style="list-style-type: none"> •zwenken •orientation •slewing •Schwenken •rotazione •orientación 	 <ul style="list-style-type: none"> •spanning •tension •voltage •spannung •tensione •tensión 	 <ul style="list-style-type: none"> •gewicht zonder ballast •poids propre sans lest •weight without ballast •gewicht ohne Ballast •peso senza zavorra •peso sin lastre
 <ul style="list-style-type: none"> •lengte •longueur •length •länge •lunghezza •longitud 	 <ul style="list-style-type: none"> •spoor •translation •rail •Kranfahren •carreggiata •rail 	 <ul style="list-style-type: none"> •vermogen •puissance •power •leistung •potenza •potencia 	 <ul style="list-style-type: none"> •micro snelheid •vitesse •speed •Geschwindigkeit •velocità •velocidad 	 <ul style="list-style-type: none"> •2^o snelheid •2^o vitesse •2^o speed •2^o Geschwindigkeit •2^o velocità •2^o velocidad 	 <ul style="list-style-type: none"> •3^o snelheid •3^o vitesse •3^o speed •3^o Geschwindigkeit •3^o velocità •3^o velocidad 	 <ul style="list-style-type: none"> •maximale hoekdruk •réactions •reactions •Eckdrücke : 10 kN = 1t •press. angolare massima •presión angular máxima
 <ul style="list-style-type: none"> •enkel inschering zonder hijsblok •simple mouflage sans moufle •2 fall reeving without houstingblock •2 Fach Einscherung ohne Hakenflasche •passaggio semplice senza paranca •solamente elevación sin polea 	 <ul style="list-style-type: none"> •enkel inschering met hijsblok •simple mouflage avec moufle •2 fall reeving with houstingblock •2 Fach Einscherung mit Hakenflasche •passaggio semplice con paranca •solamente elevación con polea 	 <ul style="list-style-type: none"> •dubbel inschering •double mouflage •4 fall reeving •4 Fach Einscherung •passaggio doppio •elevación doble 				

Konform richtlijn 2000/14/EG betreffende geluidsemissie van materieel voor gebruik buitenshuis en wijzigingen. - également conforme aux dispositions de la directive "émission sonores des équipements utilisés à l'extérieur des bâtiments" 2000/14/CE et aux législations la transposant. - Requirements of directive 2000/14/CE "noise emission in the environment by equipment for use outdoors, as amended. - Bestimmung der Richtlinie "Lärmübertragung des ausserhalb der Gebäude benutzten Ausrüstungen" 2000/14/EG und den gesetzlichen Vorschriften.



ARCOMET

Industrieweg 139 - 3583 Paal-Beringen - BELGIUM - T +32 (0)11 450 950 - EMAIL arcomet@arcomet.com - www.arcomet.com