

Schnellmontage-Citykran

City crane

Grue de la Cite







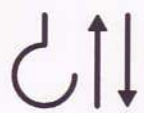

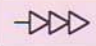

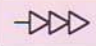






CKK 4515

DIN 15018 H1 B3



CKK 4515

Leistungsdaten Performance data Details techniques	Ausladung (m) Radius Portée	Tragkraft (kg) Lifting capacity Capacité		Max. Tragkraft (kg) Lifting capacity max. Capacité max.	
					
Ausleger 36 m Jib 36 m / Flèche 36 m	36	2200	2150	3000	6000
Ausleger 41 m Jib 41 m / Flèche 41 m	41	1800	1750	3000	6000
Ausleger 45 m Jib 45 m / Flèche 45 m	45	1550	1500	3000	6000

Geschwindigkeiten Speeds Vitesses		Heben Lifting Levage				
				m/min.	kg	m/min.
			60	1500	30	3000
			30	3000	15	6000
			6	3000	3	6000
	Katzfahren Trolleying / Distribution			m/min.	20/40	
	Drehen stufenlos Slewing / Orientation			r.p.m.	0,1 ↔ 0,9	
	Kranfahren Traveling / Translation			m/min.	20	
	Auslegerverstellen Jib luffing / Relevage flèche			0 - 45°	30 sec.	

Allgemeine technische Daten

General technical data
Details techniques généraux

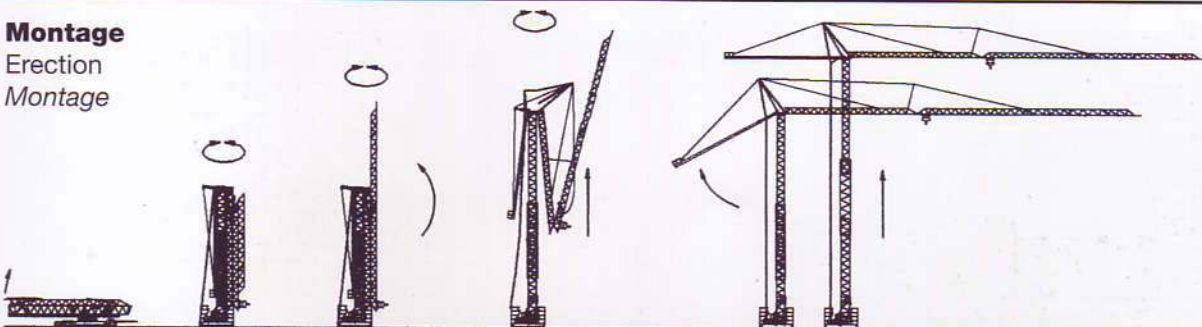
Konstruktionsgewicht Weight / Poids de la grue	kg	23.500	Spindelabstand Support basis / Ecartement	m	4,2 x 4,2
Gegengewicht I * Counterweight I / Contrepoids I	kg	4.800	Spurweite Track gauge / Voie	m	3,8
Drehradius I * Slewing radius I / Rayon de giration I	m	1,65	Ges. elektr. Leistung Motor power / Puissance total	kW	31
Zentralballast Central ballast / Lestcentral	kg	24.000	Kabelquerschnitt Cable section / Section du câble	mm ²	5 x 16
Max. Eckdruck Corner load / Pression	kN	350	Netzstrom Mains supply / Réseau	V/Hz	400/50

* Betriebsanleitung beachten!

Consider instruction manual! / Observer manuel de service!

Montage

Erection
Montage



CKK 4515

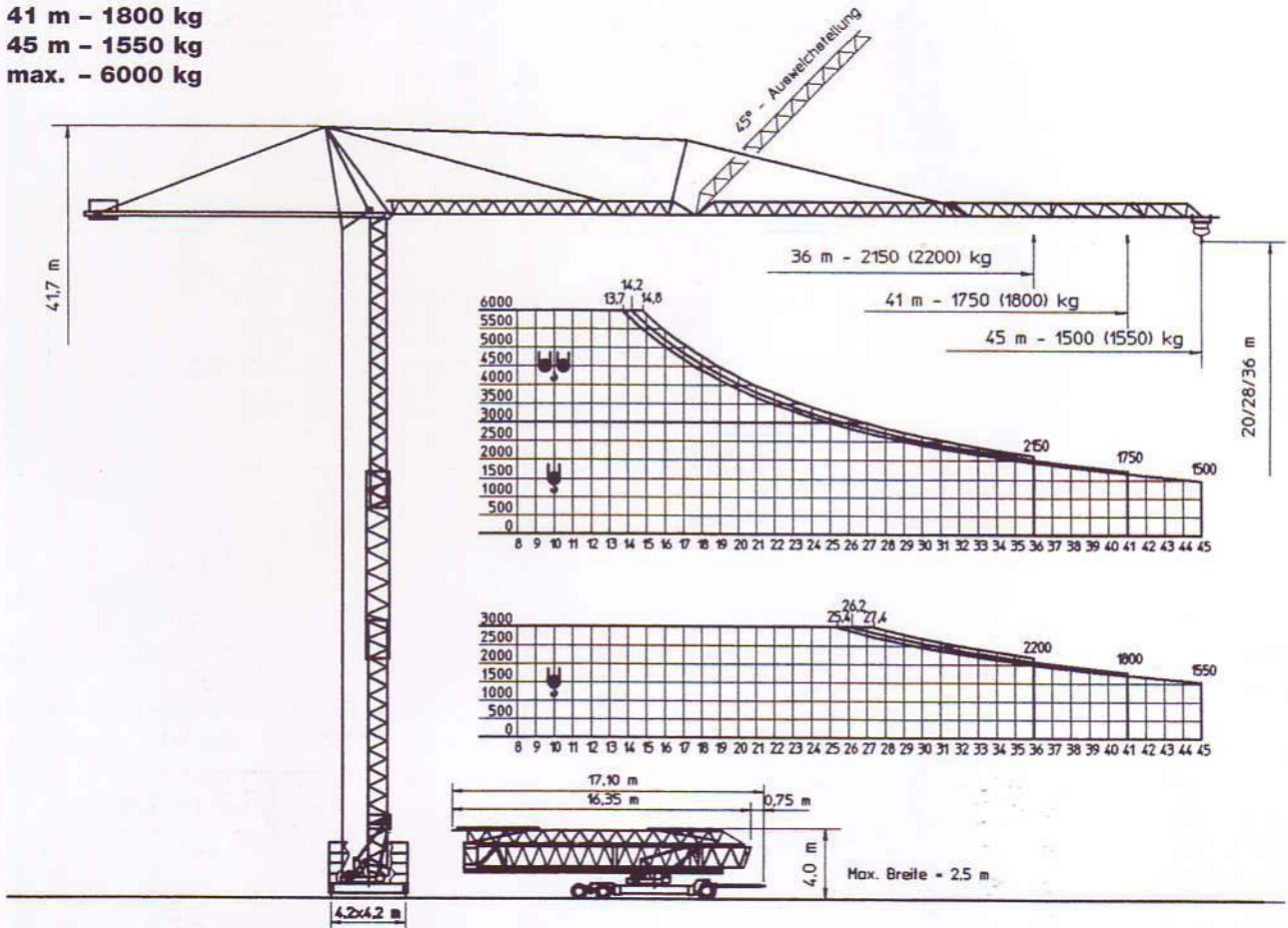
BGL 2105 - 0080

36 m - 2200 kg

41 m - 1800 kg

45 m - 1500 kg

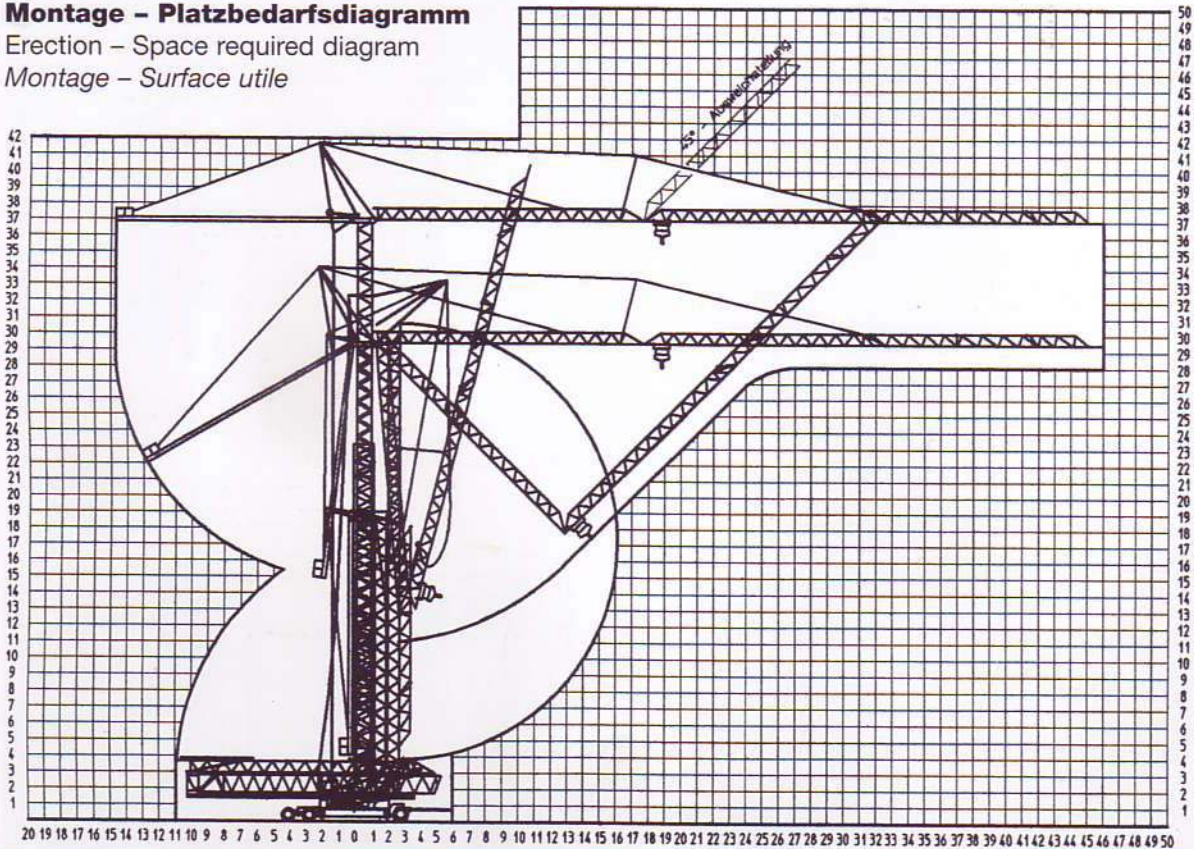
max. - 6000 kg



Montage - Platzbedarfsdiagramm

Erection - Space required diagram

Montage - Surface utile





Besondere Merkmale

Komplett straßenverfahrbar mit Turm (36 m) und Ausleger (45 m) ohne Teiledemontage

Auslegerluftmontage mit minimalem Platzbedarf

Auslegerverstellung 0 - 45° (siehe Diagramm)

Turm und Ausleger feuerverzinkt

Hub- und Drehwerk frequenzgeregelt

Technische Änderungen vorbehalten

Special Features

Road transport with complete tower (36 m) and jib (45 m) without sectional disassembly

Jib assembly above ground with little space required

Jib luffing 0 - 45° (see diagram)

Hot galvanized tower and jib

Hoisting drive and slew drive frequency controlled

Subject to change without notice

Caractéristiques particulières

Transport complet avec tour (36 m) et flèche (45 m) sans aucun démontage

Montage de la flèche en l'air avec un besoin de surface réduite

Relevage de la flèche 0 - 45° (att. diagramme)

Tour et flèche galvanisés à chaud

Lerge et rotation avec variateur

Sous réserve de modification

KSD Kransysteme GmbH

Schillerstraße 30 - 38
D-66482 Zweibrücken

Telefon: +49 (0) 63 32 - 92 18 0

Telefax: +49 (0) 63 32 - 92 18 40

e-Mail: ksd@ksd-kransysteme.de

Internet: www.ksd-kransysteme.de

Überreicht durch / Presented by / Présenté par:

BMD

BAUMASCHINENDIENST

HEIDELBERG

Am Taubenfeld 33 · D - 69123 Heidelberg
Telefon: 0 62 21 / 8 35 80 · Telefax: 0 62 21 / 83 32 45
www.bmd-heidelberg.de