

Schnellmontagekran
Fast self erecting tower crane
Grue à montage rapide

KSD
Kransysteme





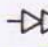



TK 2510/3

DIN 15018 H1 B3



TK 2510/3

Leistungsdaten Performance data Details techniques	Ausladung (m) Radius Portée	Tragkraft (kg) Lifting capacity Capacité	Max. Tragkraft (kg) Lifting capacity max. Capacité max.
Ausleger 25 m Jib 25 m / Flèche 25 m	25	1000	3000

Geschwindigkeiten Speeds Vitesses	Heben Lifting Levage				
		m/min.	kg	m/min.	kg
		45	1500	-	-
		22	3000	-	-
		5	3000	-	-
	Katzfahren Trolleying / Distribution			m/min.	20/40
	Drehen stufenlos Slewing / Orientation			r.p.m.	0,1 ↔ 0,9

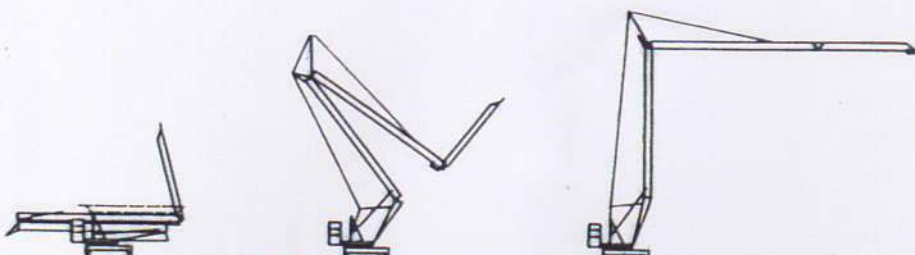
Allgemeine technische Daten

General technical data
Details techniques généraux

Konstruktionsgewicht Weight / Poids de la grue	kg	8.000	Ges. elektr. Leistung Motor power / Puissance total	kW	17
Gegengewicht Counterweight / Contrepoids	kg	12.500	Kabelquerschnitt Cable section / Section du câble	mm ²	5 x 10
Drehradius Slewing radius / Rayon de giration	m	2,5	Netzstrom Mains supply / Réseau	V/Hz	400/50
Max. Eckdruck Corner load / Pression	kN	115			
Spindelabstand Support basis / Ecartement	m	3,8x3,8			

Montage

Erection
Montage

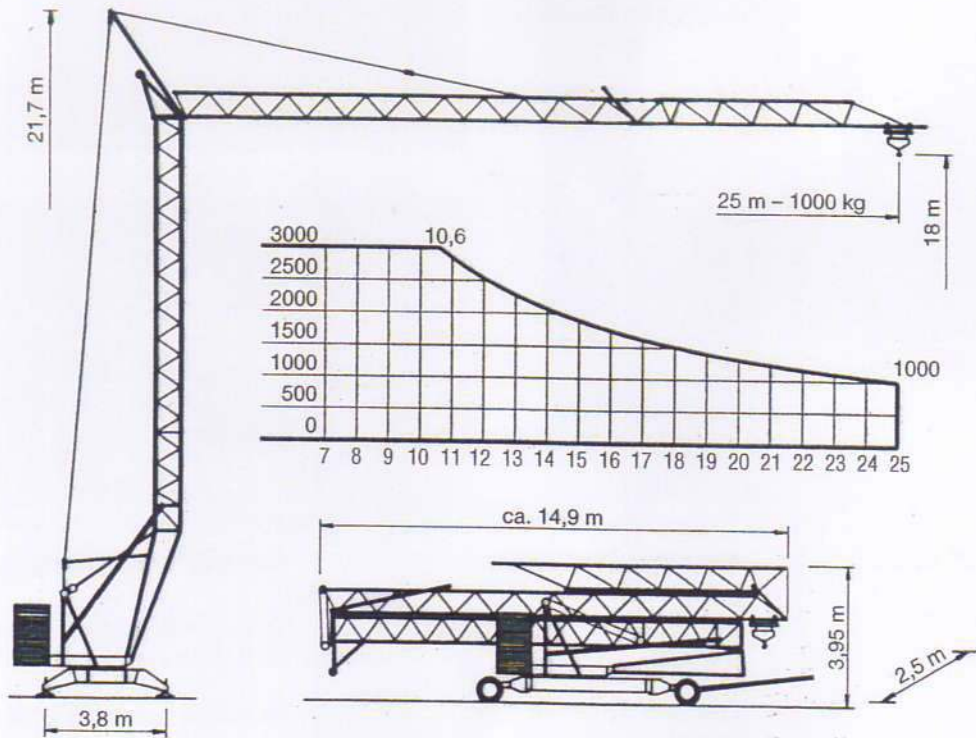


TK 2510/3

BGL 2102 - 0025

25 m - 1000 kg

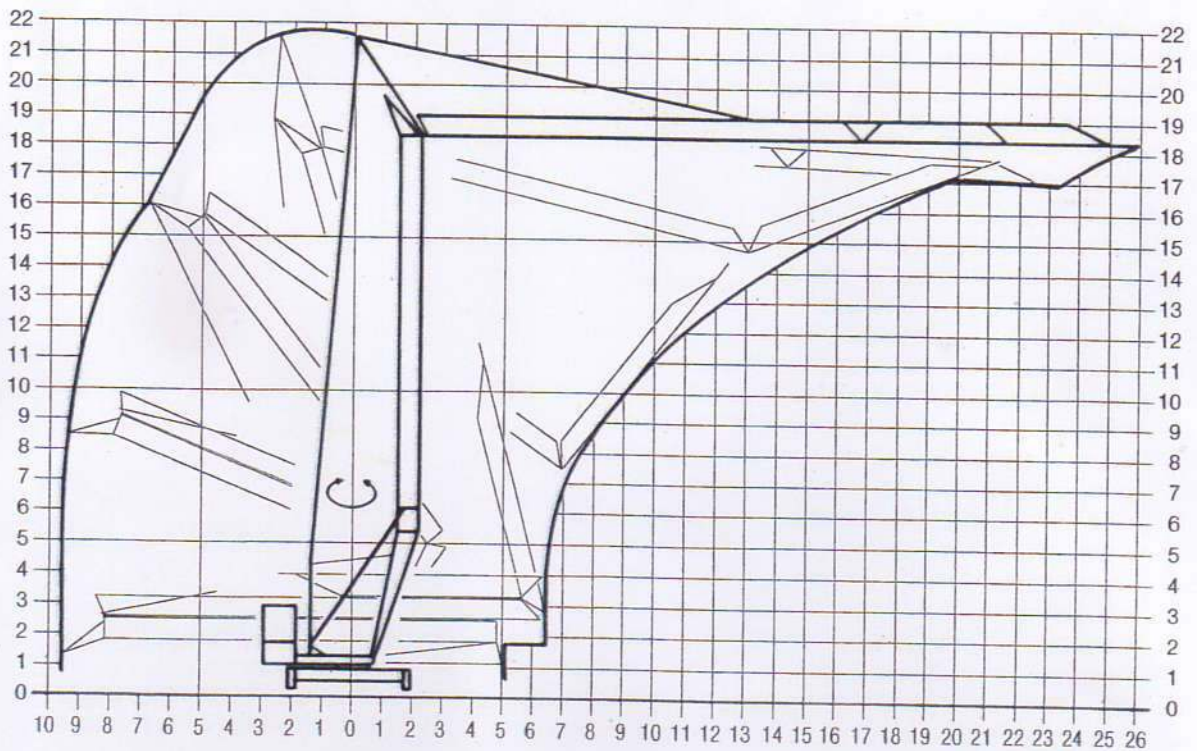
max. - 3000 kg

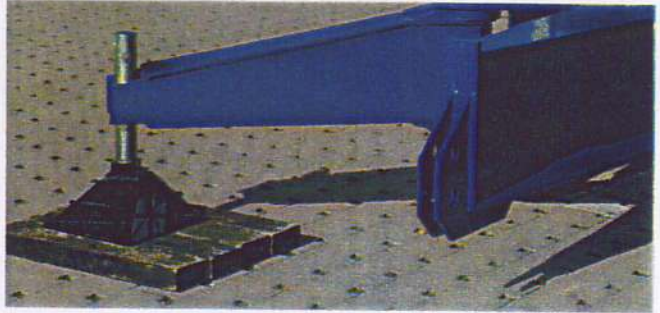


Montage - Platzbedarfsdiagramm

Erection - Space required diagram

Montage - Surface utile





Besondere Merkmale

- Mit 6,7 Tonnen Teilballast verfahrbar
- Montage über Einseiltechnik in 4 Minuten
- Auslegerluftmontage
- Automatische Abspindelvorrichtung
- Automatische Katzseilnachspannung
- Stufenloses Drehwerk mit Wirbelstrombremse
- 2 Katzfahrgeschwindigkeiten
- Turm und Ausleger feuerverzinkt

Technische Änderungen vorbehalten

Special Features

- Movable with partial ballast of 6,7 tons
- Erection by single rope technique within 4 minutes
- Jib assembly above ground
- Automatic support device
- Automatic trolley cable rope tension device
- Variable slewing drive with eddy current brake
- 2 trolley speeds
- Hot galvanized tower and jib

Subject to change without notice

Caractéristiques particulières

- Transportable avec lest partiel de 6,7 tonnes
- Montage par technique monocâble en 4 minutes
- Montage de la flèche en l'air
- Mise en place automatique des sabots
- Tendeur automatique de chariotage
- Rotation à courant de Foucault
- 2 vitesses de chariotage
- Tour et flèche galvanisés à chaud

Sous réserve de modification

KSD Kransysteme GmbH

Schillerstraße 30 - 38
 D-66482 Zweibrücken
 Telefon: (0 63 32) 92 18 - 0
 Telefax: (0 63 32) 92 18 - 40
 e-Mail: ksd@ksd-kransysteme.de
 Internet: www.ksd-kransysteme.de

Überreicht durch / Presented by / Présenté par:



BAUMASCHINENDIENST
HEIDELBERG

Am Taubenfeld 33 · D - 69123 Heidelberg
 Telefon: 0 62 21/8 35 80 · Telefax: 0 62 21/83 32 45
 www.bmd-heidelberg.de